

Chatham Students in Residence – Discounted Rate Structure				
<i>*rent per person</i>				
Room Type	1 Person	2 Persons	3 Persons	4 Persons
Studio	\$600 - \$650	–	–	–
One Bedroom, 1 Bathroom	\$900	\$450	–	–
One Bedroom, 1 Bathroom Corner	\$1,000	\$500	–	–
Two Bedroom, 1 Bathroom	\$1,100	\$650	\$367	–
Two Bedroom, 2 Bathroom with Private Terrace	\$1,400	\$700	\$467	\$350

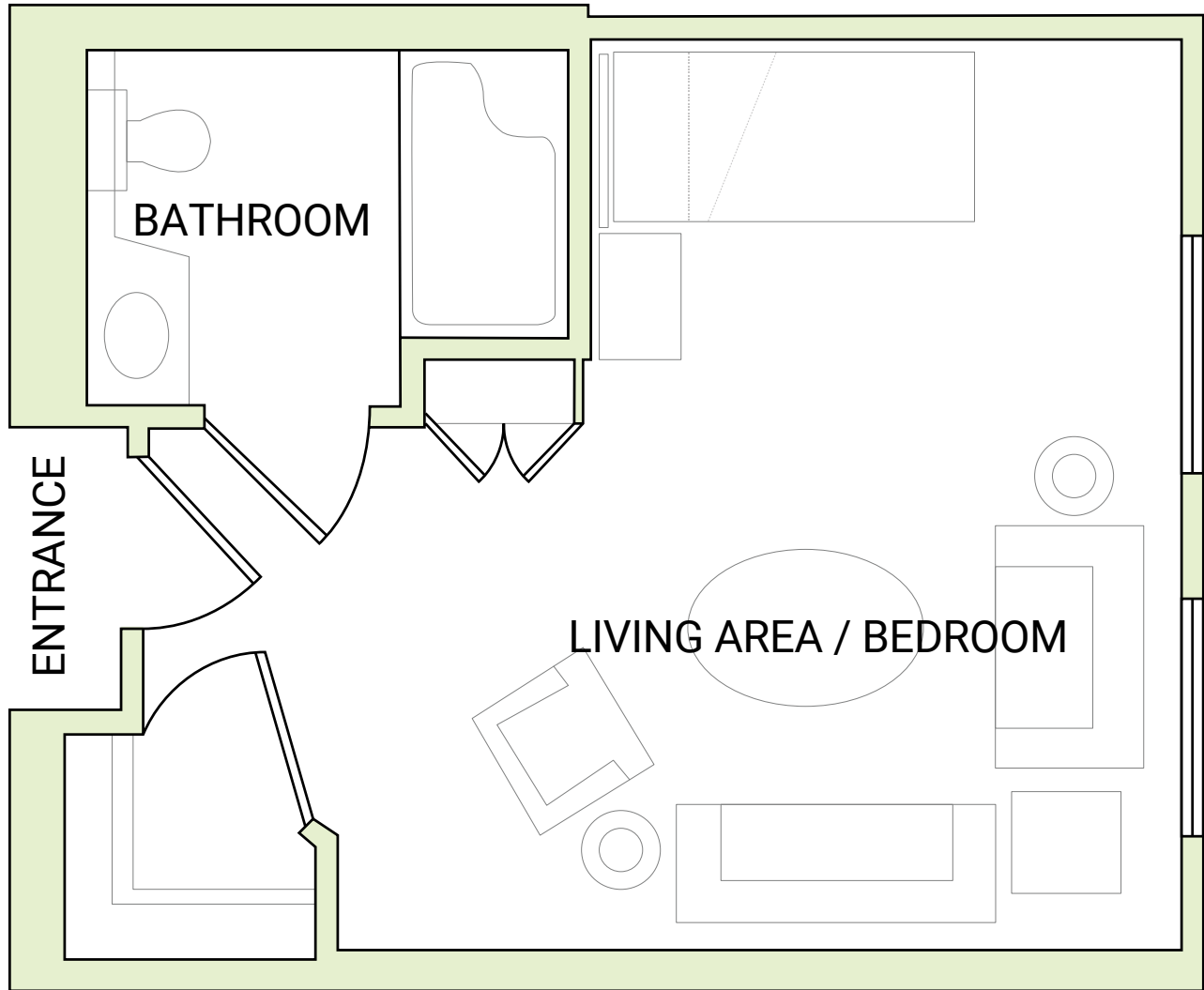
Note: \$250 one-time security deposit per student
 \$75 per month fee for furnishings (bed, nightstand, dresser, chair, lamp)
 All utilities and Wifi are included in the rent

Choosing Your Roommate(s)

It is the students’ responsibility to find roommates who are enrolled as Chatham University Health Sciences Graduate Students and are approved by Vincentian to move in if they wish to split the cost of an apartment at Vincentian Schenley Gardens. Studio apartments can accommodate one student. One-bedroom apartments can accommodate up to two students. Two-bedroom apartments can accommodate up to three or four students, based on configuration.

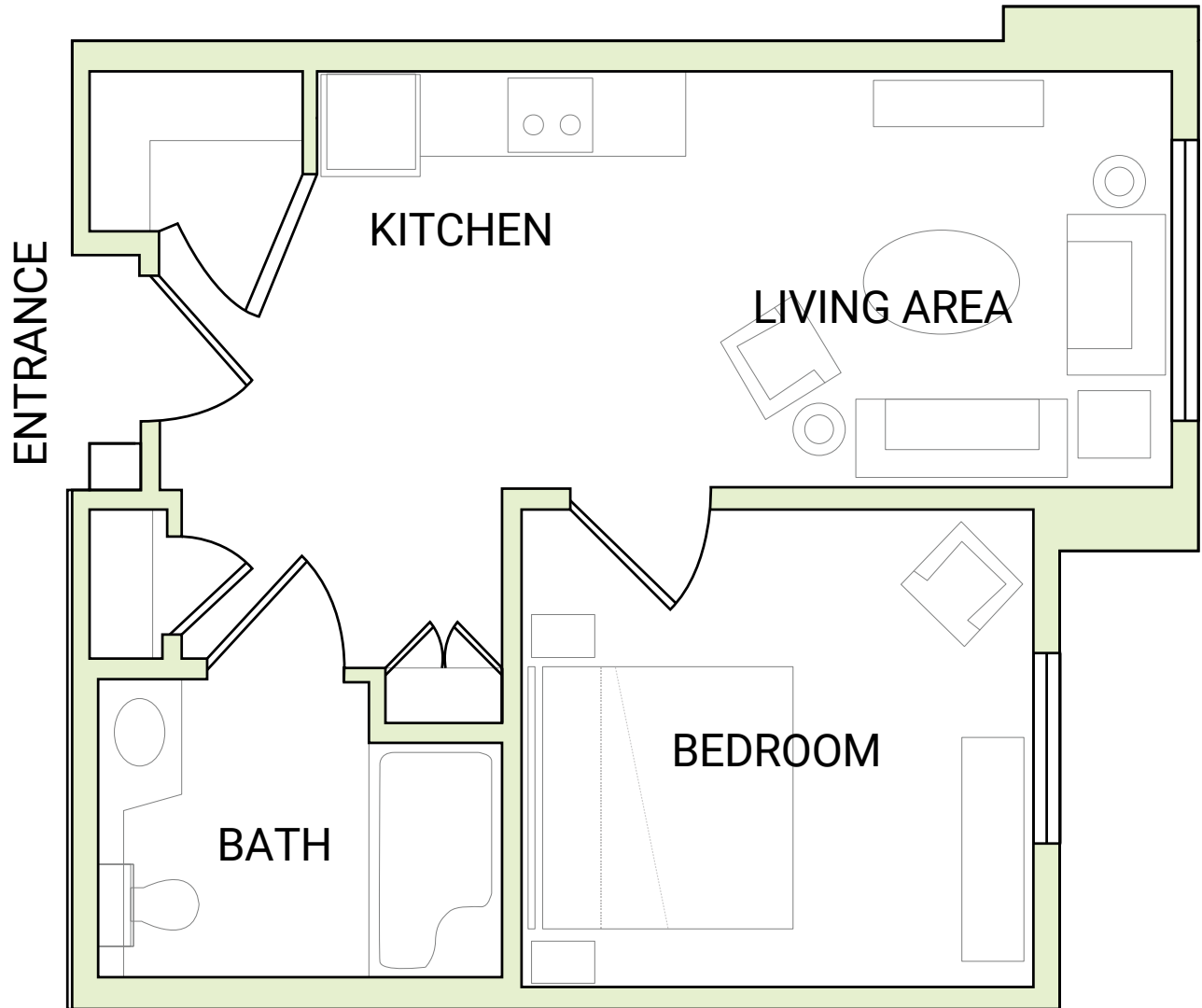
If any roommate breaks their lease and moves out, it is the responsibility of the remaining roommate(s) to pay the full monthly rent for the apartment.

STUDIO APARTMENT



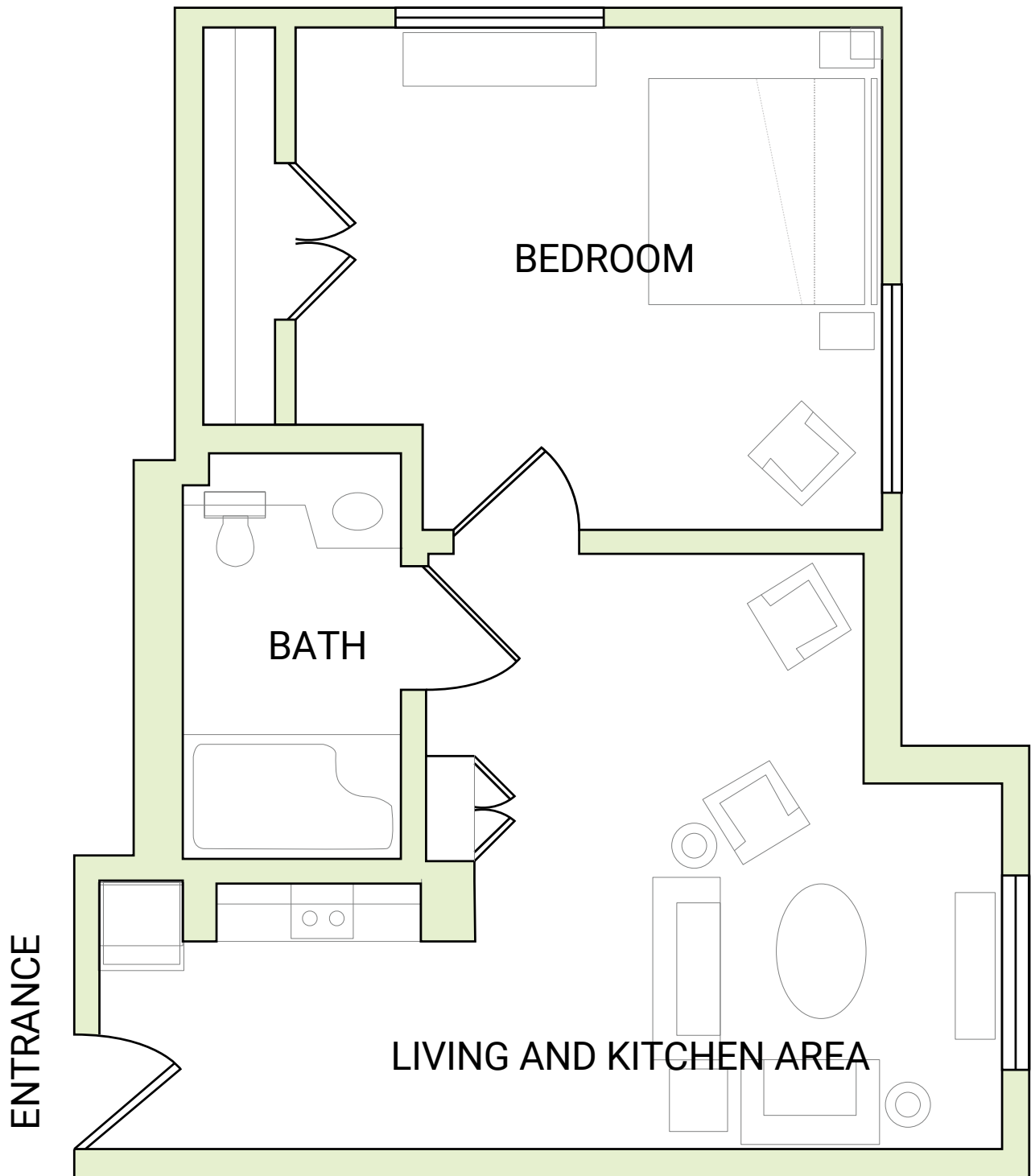
For representation only. Actual floorplans may vary.

ONE BEDROOM, ONE BATHROOM



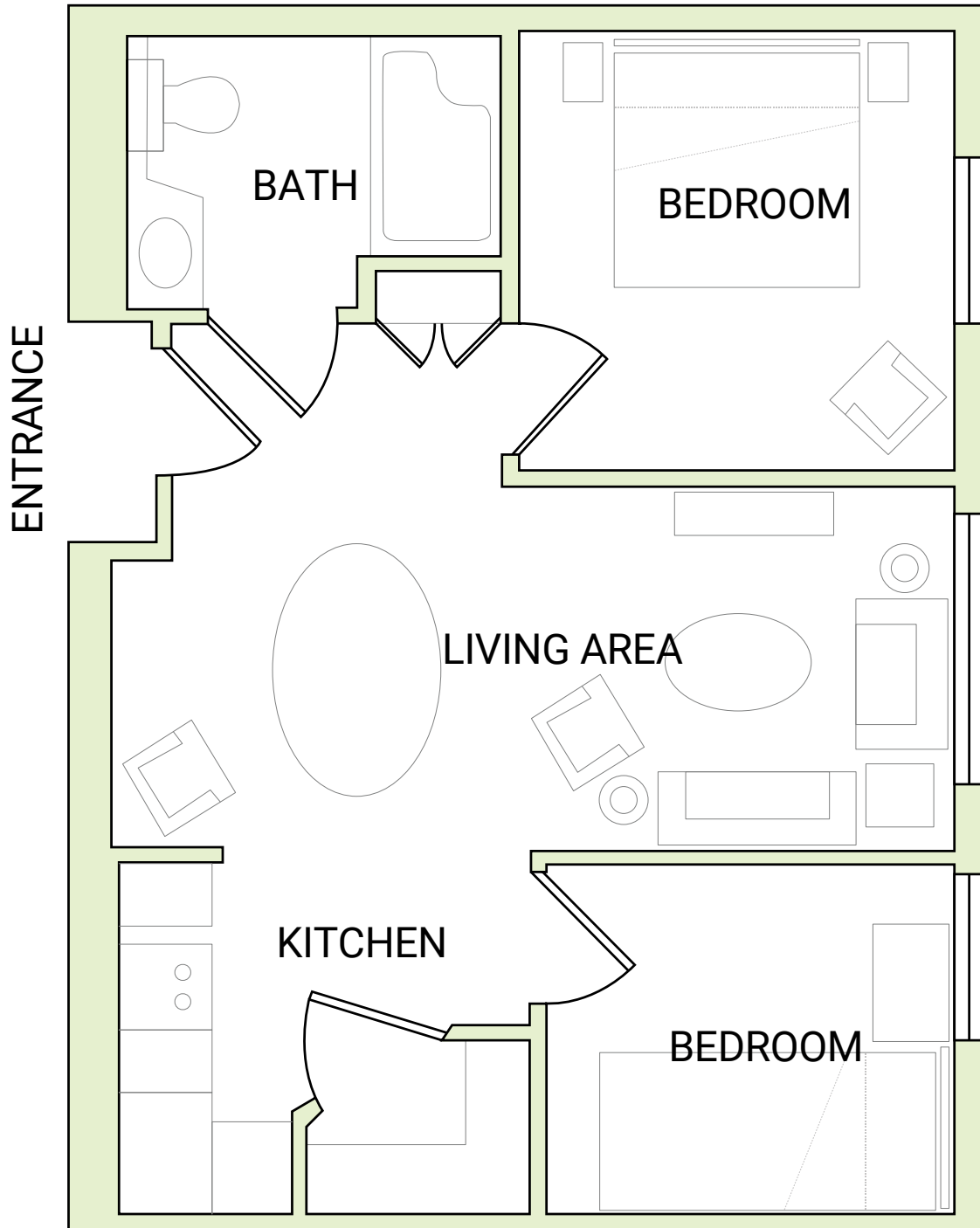
For representation only. Actual floorplans may vary.

ONE BEDROOM, ONE BATHROOM, CORNER



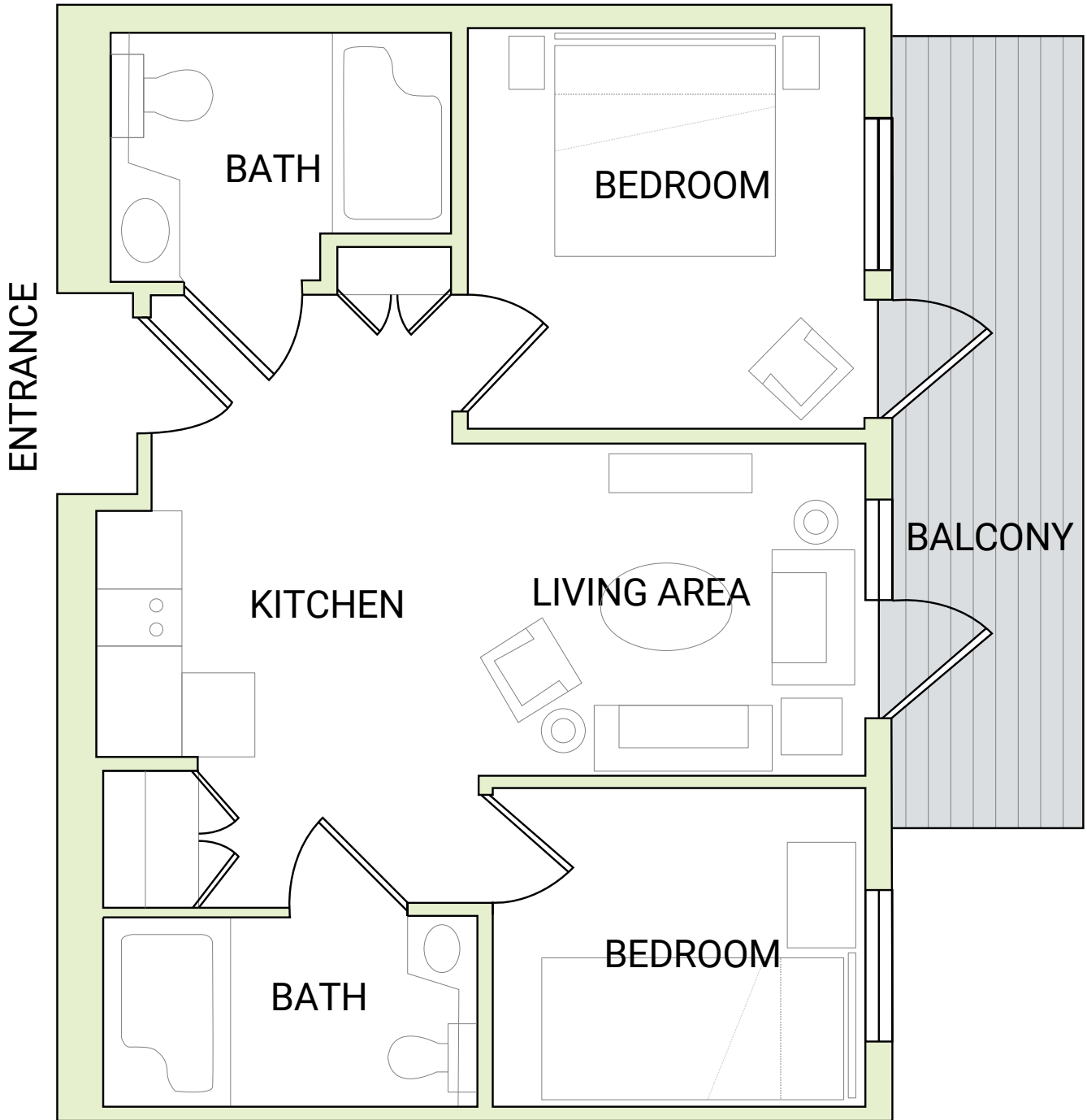
For representation only. Actual floorplans may vary.

TWO BEDROOM, ONE BATHROOM



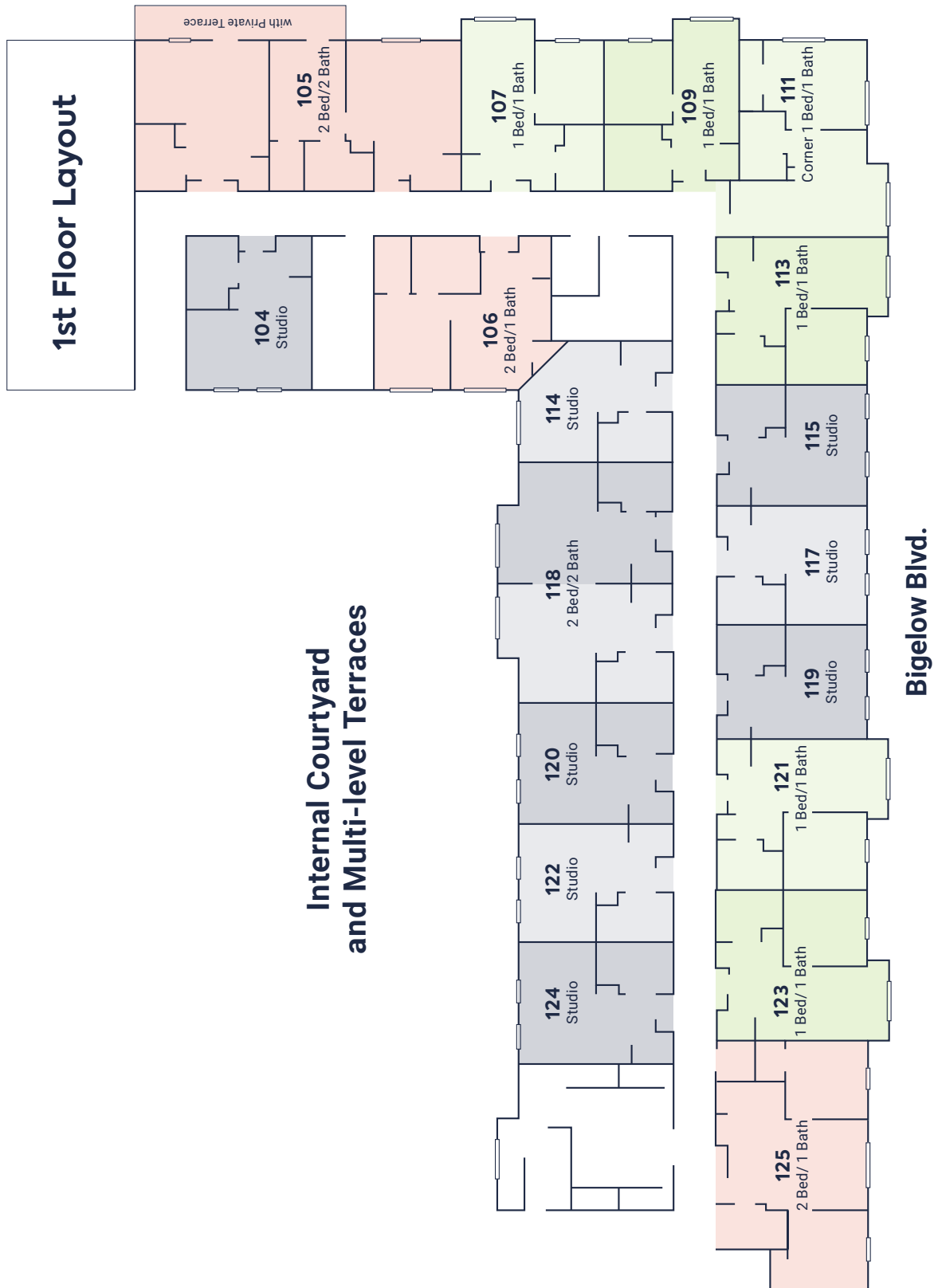
For representation only. Actual floorplans may vary.

TWO BEDROOM, TWO BATHROOM WITH PRIVATE TERRACE



For representation only. Actual floorplans may vary.

APARTMENT LOCATION LAYOUT



For representation only. Actual floorplans may vary.

VINCENTIAN SCHENLEY GARDENS PHOTOS

